

## Instruction for Working on Zirconia and Lithium Disilicate with the Magic Touch Line

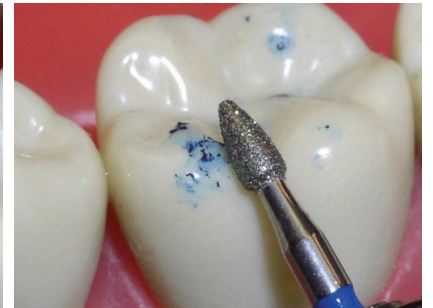
### Bite Adjustment on all types of Ceramic and Zirconia Base Structure

Strauss Magic Touch line of precise burs are uniquely designed with a newly patented grit which allows for fast and smooth bite adjustment, similar to that delivered by a coarse grit, but without the risk of micro-fracturing or chipping. The Magic Touch will leave a very fine finish without scratches on all types of ceramic such as Zirconia, Lithium Disilicate, E-MAX and Bruxzir.

**Instruction:** When using the Magic Touch bur of any shape for adjusting, use a light feather touch with a light movement and water spray. Use the appropriate Strauss diamond polisher for the ceramic structure of your crown.



368/023PF

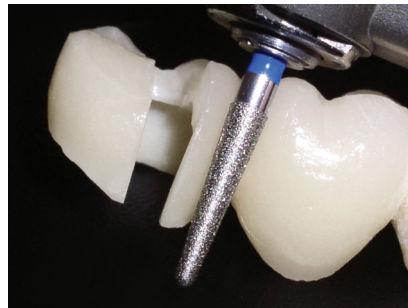


390/018PF

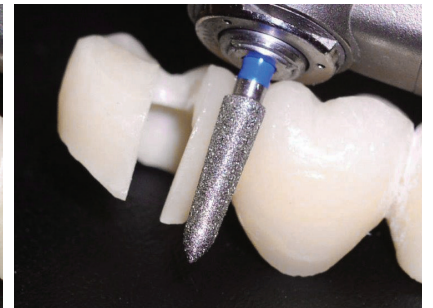
### Ceramic and Zirconia Base Crown and Bridge Removal

Strauss offers specially designed Magic Touch diamond burs which help eliminate the problems associated with removing ceramic, zirconia and lithium disilicate crowns and bridges such as the Lava®, Procera®, InCeram™, Empress® I, II, Vita®, Procad®, E-MAX and Bruxzir.

**Instruction:** Light touch pressure with movement up and down to penetrate through the ceramic structure with a lot of water spray. Then, use an instrument to separate the crown from the tooth.



856/018PF or 856/025PF

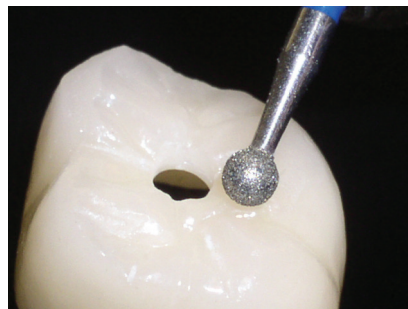


878K/021PF

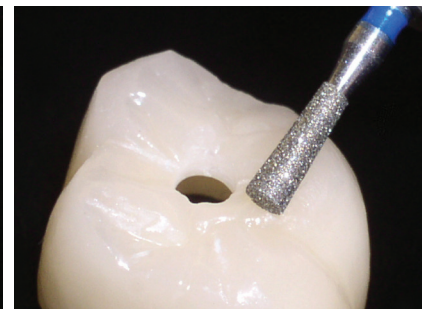
### Endo Access in Ceramic and Zirconia Base Crowns

Strauss recognizes the daunting task faced by endodontists and dentists when performing a root canal through zirconia. The Solution: A specially designed Endo Access bur capable of tunneling through the porcelain layer in seconds, and the zirconia or lithium disilicate-based crown or bridge with efficiency previously thought impossible. Magic Touch diamond burs are designed for Endo Access in all types of ceramic crowns such as Zirconia, Lithium Disilicate, E-MAX and Bruxzir. **Without micro-fracturing!**

**Instruction:** When using the Magic Touch inverted cone or round bur, tilt the bur in a 45° motion from the right to the left a few times with a **light touch of pressure** and a lot of water spray until you penetrate through the ceramic structure with ease. Then, use the necessary instrument for the root canal procedure.



801/018PF or 801/022PF



807/012PF or 807/016PF

**“For Best Results, use a light touch of pressure with movement.”**

## Instruction for Working on PFM Crown with the Barracuda Line

### **The Barracuda Super Bur Crown & Amalgam Removal (Metal Cutting Bur)**

The Barracuda Metal Cutting Bur is designed to maximize performance while cutting through precious and non-precious metal sub-structures such as Nickel, Chrome, Gold, Amalgam and other metals and alloys faster and more efficiently.

#### **One-piece solid carbide Barracuda Benefits:**

- Maximum Value and Performance
- Special blade geometry featuring fine crosscuts and a unique neck design produce a bur that quickly cuts metal with reduced chatter, breakage, and improved control.
- Fastest and most efficient quality bur for crown removal and cavity preps.

#### **Instructions for Use with Barracuda Metal Cutting Bur**

For removal of a PFM structure, crown or a bridge, make a groove with a diamond bur until metal is showing. Use the Barracuda to cut off the metal structure with light pressure and an up and down movement with water spray. Then, use the desired instrument to separate the crown from the tooth.

For Amalgam removal, penetrate the Amalgam cavity with a light circular movement until all Amalgam is removed.

For Endo Access on PFM crown, grind the porcelain with the Magic Touch bur until metal is visible, then penetrate with the Barracuda B1558 to go through the metal. Then, use the necessary instrument for root canal procedure.

