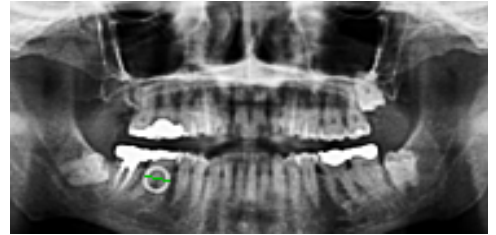




Strauss Diamond Instruments Inc.

How to Measure for Implants in Dexis

Perform a panoramic radiography with the MagiCalibrator device in the field of view. Open the panoramic radiograph in Dexis. In the menu bar, click the *Measurement* icon, causing a pop-up box to appear. Click on *Quick Calibration*.



A pop-up box will appear prompting you to "Please click on one end of the known length and drag to the other end." The MagiCalibrator will serve as the object of known size in the x-ray



Number of Canals:

Quick Calibration

Distance: mm

Angle: °

Record Measurement

Density: %

Calibrate Canal Done

Once the measurement is completed, another pop-up box will appear estimating the size of the object and prompting you to "Please enter the true length of the distance (in mm)". Enter "10" to represent the true size of the MagiCalibrator ring (10mm) and click "OK". (If the estimated number is already 10, then this means that the image is not foreshortened or elongated.)

Please click on one end of the known length and drag to the other end.

Radiographic Balls Done

A new pop-up box will appear with the "Distance" box checked. With this box checked, you can click on any two points on the x-ray image, and a measurement of the distance between them will appear in the box labeled "Distance: [X] mm". This will enable you to measure the precise length and width of any object in the image as well as the area in which the implant will be placed.

Input

! Please enter the true length of the distance (in mm).

OK

Number of Canals:

Quick Calibration

Distance: mm

Angle: °

Record Measurement

Density: %

Calibrate Canal Done